



# VILLAGE OF Berkeley

## REFUSE-RECYCLING COLLECTION PROGRAM 2017

### CART COLLECTION FORMAT FOR RECYCLING



Recycling is collected bi-weekly (every other week), from your “Blue Lid” recycling cart.

Each residence is supplied a recycling cart (blue lid). The hinged lid, wheeled cart combined with the single stream collection format makes recycling more convenient and easier. (All program listed recyclables are placed in the one blue lid cart.)

### HERE'S HOW THE PROGRAM WORKS!

#### HOUSEHOLD PROGRAM

Residents may set out their REFUSE cart each week. Household refuse including junk items that can be placed in the cart with the lid closed will be accepted. Hazardous waste and materials prohibited by State law will not. On occasion a bit more refuse than will “fit” in the cart may be generated. In those cases a pre-paid Village of Berkeley Universal Solid Waste Tag must be affixed to the handle of each additional can set out.

#### Additional household refuse must be set out in containers:

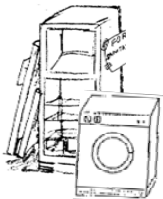


- No larger than 32 gallons in capacity,
- That are waterproof, have handles, and tight fitting lids,
- That can be lifted by one person, and not exceed 50 pounds when full.

(1) bulk item per household per week may be set out for collection for no additional charge. **Bulk items include:** household furniture, grills, TVs, mattresses, tables, bicycles, etc., **but do not include appliances** (see white goods). Each additional item of the same type will require one (1) **Village of Berkeley Universal Solid Waste Tag**.



**Remember:** Household waste is limited to what is generated at the residence being served. Household waste does not include waste generated from commercial business activity.



**WHITE GOODS:** Washers, stoves, dryers, hot water heaters, refrigerators, freezers, room air conditioners, etc. These items still all require Special Pickup Service.

### HOME REMODELING MATERIALS

Household remodeling debris / materials such as cabinets, plumbing fixtures, doors, windows, and miscellaneous wood 4' in length or less that, in total, are less than 1 cubic yard can be set out in 32 gallon refuse cans, or bundles, each weighing no more than 50 pounds. Each can or bundle set out must have a **Village of Berkeley Universal Solid Waste Tag** affixed to the handle of the can or on the bundle to be collected. The cans or bundled items are to be set on the parkway next to your refuse cart.

#### COLLECTION DAY IS THURSDAY

- Refuse cart & YW weekly (YW season Apr. 1- Nov. 30)
- Recycling (Blue Lid) cart **is set out every other week** (Please refer to Recycling Schedule)
- Refuse - Recycling -YW are to be set out by 6 A.M. on your regularly scheduled collection day.

### VILLAGE UNIVERSAL SOLID WASTE TAGS

Tags are available at these convenient locations:

- Village Hall, 5819 Electric Avenue
- LeDonne True Value Hardware, 1750 Taft Avenue
- Berkeley Finer Foods, Inc., 5447 St. Charles Rd.
- PK'S Pantry, 1625 Taft Avenue



## RECYCLING

**Go Bagless! Do not put plastic bags into your recycle cart. If you use plastic bags to store recycling please empty the recycling into your cart and toss the plastic bag in the refuse cart.**

### The Village's convenient recycling program accepts:



- Rinsed **aluminum** containers (beverage/food)
- Rinsed **glass** containers (beverage and food - green/clear/brown)
- Rinsed **Bi-Metal** containers: soup, vegetable, coffee, food, empty paint - aerosol containers
- **Newsprint** (anything paper that comes with or in a newspaper)
- **Chipboard/Corrugated boxes** (cereal, food, tissue boxes, gift/shoe boxes, etc.). **Please breakdown/cut large boxes into flat 2' by 2' pieces**
- **Mixed Paper** (junk mail, envelopes, phone books, office/notebook, computer, white or colored paper, no metal fasteners attached to it, paper grocery bags magazines and catalogs)
- Rinsed **Plastic** food-beverage containers stamped with the number 1 through 7 on the bottom of the container.



### ITEMS NOT ACCEPTED IN RECYCLING CART

Plastic Bags – Batteries – Tissues - Disposable Paper Cups  
Cardboard and Styrofoam Take Out Food Boxes  
Pizza Boxes - Medical Sharps - Light Bulbs- Window Glass  
Mirrors - Bike or Car Parts – Dishware, Drinking Glasses or Cups

Recyclables are placed in the “Blue Lid” recycling cart, and are collected bi-weekly. Please refer to the Recycling Collection Schedule listed below. If a holiday changes the schedule the collection day is highlighted.

## RECYCLING SCHEDULE

### WEST OF TAFT THURSDAY 2017

Recycling Collection Days

January 12, 26  
February 9, 23  
March 9, 23  
April 6, 20  
May 4, 18  
June 2 (Friday), 15, 29  
July 13, 27  
August 10, 24  
September 8 (Friday), 21  
October 5, 19  
November 2, 16, 30  
December 14, 29 (Friday)

### EAST OF TAFT THURSDAY 2017

Recycling Collection Days

January 6, 19  
February 2, 16  
March 2, 16, 30  
April 13, 27  
May 11, 25  
June 8, 22  
July 7 (Friday), 20  
August 3, 17, 31  
September 14, 28  
October 12, 26  
November 9, 24 (Friday)  
December 7, 21

## YARD WASTE

**YW** consists of grass clippings, twigs, leaves and plant material. **YW** is to be set out in 30 gallon **YW bags** or in a conventional **refuse container** (32 gallon) **clearly marked YW on the can**. Marking the can better identifies the can for collection crews. **YW bags or cans are not to exceed 50 lbs.** when full. Brush can be tied into bundles, 4 feet in length, and should not exceed 50 lbs. **YW in plastic bags will not be collected.** **YW** is limited to what is generated at the residence served. **YW** must be out by 6 AM along with refuse during **YW collection season: April 1- November 30.**

**Christmas trees** will be collected each Thursday during the month of January, each year.

If you have Questions about the service, recycling, need to schedule a Special Pick Up, or require major debris removal assistance, **Call 708-344-5000.**