

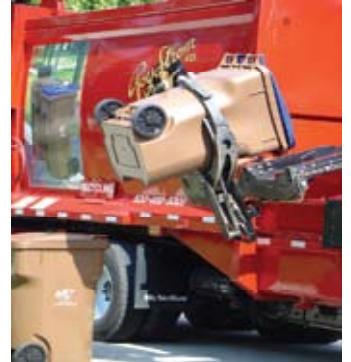


# Village of North Riverside

## NEW REFUSE-RECYCLING PROGRAM



The Village Board through a thorough Request for Proposal process selected Roy Strom Refuse Removal Service to provide refuse, recycling, and yard waste collection service to residents. Roy Strom's proposal offered a cost efficient environmentally responsible service program. The company is utilizing a combination of **dual collection and automated collection equipment** for the collection of refuse and recyclable materials in the Village. The dual collection trucks are divided (steel wall) into two completely separate collection chambers. The materials (refuse/recyclables) are not commingled. They are discharged from residential carts into separate hoppers and pulled into separate storage chambers. Fully automated equipment will also be utilized to quickly and efficiently collect MSW and recyclables. The collection formats have been



used with great success by all major waste hauling companies and by the Roy Strom Company for over a decade in the near west suburbs. Utilizing the combination collection format will allow the company to reduce the number of trucks needed to meet the requirement, thus reduce GHG emissions in the Village, the number of trucks operating on Village streets, wear and tear on municipal infrastructure, and heavy truck traffic on the Village's residential streets.

### COLLECTION UNDER THE NEW SERVICE BEGINS SATURDAY, SEPTEMBER 8th

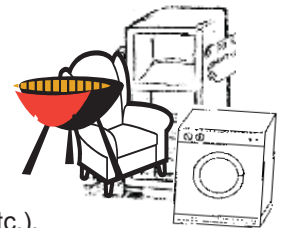
#### HOW THE VILLAGE'S IMPROVED PROGRAM WORKS!

Due to the Labor Day Holiday being observed on Monday, Sept. 3 the first collection under the new program will take place on Saturday, Sept. 8. Thereafter, residents' collection day will be on Friday. Residents set out their new **BROWN LID REFUSE** cart each week. All household refuse including junk items that can be placed in the cart with the lid closed will be accepted. Hazardous waste and materials prohibited by State law will not. On occasion a bit more refuse than will "fit" in the cart may be generated. In those cases residents may set out the additional refuse in Village approved containers.



Additional household refuse must be set out in approved containers that:

- Are no less than 10 gallons or larger than 32 gallons in capacity,
- Are waterproof, have two handles, and tight fitting lids,
- Can be lifted by one person, and not exceed 50 pounds when full.



**BULK ITEMS - WHITE GOODS-HOME REMODELING DEBRIS:** Bulk items that cannot be placed in the refuse cart or other Village approved container (furniture, grills, mattresses, etc.), and **White goods / large appliances** (like washers, stoves, dryers, hot water heaters, refrigerators, freezers, room air conditioners, etc.), and **Construction Material** (wood, bricks, concrete, fencing, rocks, mud and clay, shingles and gutters, home remodeling debris like drywall, cabinets, flooring, etc.) are typically not collected during the regular weekly collection. *Special arrangements for the collection of these items may be made by calling: 708-344-5000.*



**ELECTRONICS.** State Law prohibits the collection of certain electronics: computers, printers, laptops, monitors, TV's, keyboards, scanners, etc. for landfill disposal. Contact the Village or Roy Strom for more information on what items cannot be set out for collection and how they can be properly disposed of.

### FRIDAY SEPTEMBER 28th RECYCLING WILL BE COLLECTED IN A CART

Roy Strom, the Village's selected hauler will begin collecting recycling each week from your new "Blue Lid" recycling cart. The new format makes recycling more convenient, easier, and provides residents more recycling capacity. No more trips to Village Hall for plastic bags, attempting to stuff recycling into bags, tying bags shut, and dragging them to the curb or alley. Just lift the **BLUE LID** on your recycling cart and toss all program recyclables into the cart, roll it out on collection day.



## COLLECTION DAY IS FRIDAY

Refuse / **Recycling** carts and YW are collected on Friday (YW season April through November )  
Refuse - Recycling -YW are set out by **no later than 6 AM** on your regularly scheduled collection day.  
**Please note that your home's collection time may be different than it is presently.**

### RECYCLING

The Village's improved recycling program accepts more:

- Rinsed **aluminum** containers & trays (beverage/food)
- **Aseptic (beverage) packaging, rinsed gable top containers** (milk –juice cartons)
- Rinsed **glass** containers (beverage and food - green/clear/brown)
- Rinsed **Bi-Metal** containers: soup, vegetable, coffee, food, and empty paint - aerosol containers
- **Newsprint** (anything paper that comes in a newspaper)
- **Chipboard/Corrugated boxes** (cereal, food, tissue boxes, gift/shoe boxes, beverage carrier stock, etc.). **Please breakdown large boxes into 2' by 2' pieces**
- **Mixed Paper** (junk mail, envelopes, phone books, office/notebook, computer, white or colored paper, no metal fasteners attached to it, paper grocery bags magazines and catalogs)
- Rinsed **Plastic** containers stamped with the number on the bottom of the container.



Recyclables are placed in the **"BLUE LID RECYCLING CART,"** and are collected on Friday along with refuse and YW.

### **ITEMS NOT ACCEPTED IN RECYCLING CART**

Disposable Paper Cups and Plates, Towels, Tissues  
Take out Food Boxes made of Cardboard and Styrofoam  
Electronics-Batteries-Medical Sharps - Light Bulbs-  
WindowGlassMirrors - Bike or Car Parts – Dishware, Drinking Glasses or Cups

### YARD WASTE

**YW** consists of grass clippings, twigs, leaves and plant material. **YW** is to be set out in 30 gallon **YW bags** or in a rigid plastic container, not exceeding 33 gallons, **YW is to be clearly marked on the can with Yellow YW placards that are available at the Village Commons.** **YW bags or cans are not to exceed 50 lbs. when full. YW placed in plastic bags will not be collected. YW must be out by 6 AM along with refuse during YW collection season: First Friday in April thru last Friday in November.**



### BRUSH

The Village will continue to collect brush/branches each **Tuesday** from April through November each year. **Christmas trees** will be collected each Friday during the month of January.

### FALL LEAF COLLECTION

The Village provides fall leaf collection between late October and late November for the disposal of leaves. Leaves can be set out in brown yardwaste bags or rigid plastic containers not exceeding 33 gallons (each can set out is to be clearly marked leaves or YW) **through the last Friday in November.**

### HOLIDAY COLLECTION SCHEDULE

Should a holiday occur or be observed on Monday through Friday the collection of refuse, recyclables, and yard waste will take place on Saturday. The following days are the **only days** observed as collection holidays each year:

**Christmas Day • New Year's Day • Memorial Day  
Fourth of July • Labor Day • Thanksgiving Day**



**Questions** about the service, recycling? Need to schedule a Special Pick Up, or require major debris removal for home remodeling projects

Call 708-344-5000 [www.roystrom.com](http://www.roystrom.com)

